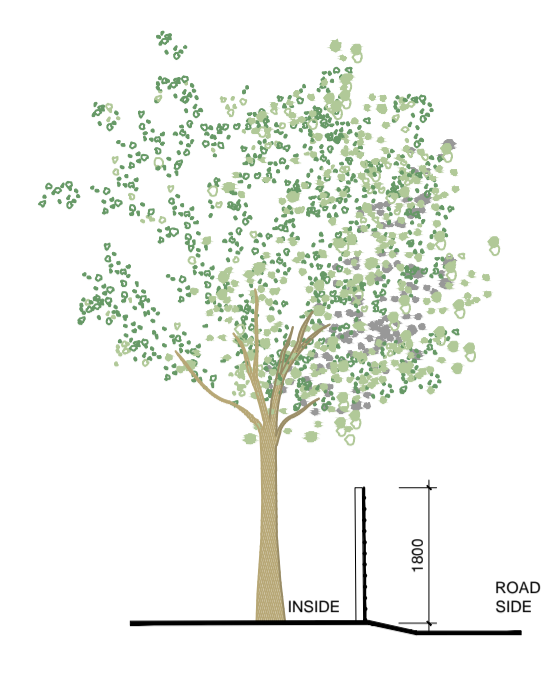
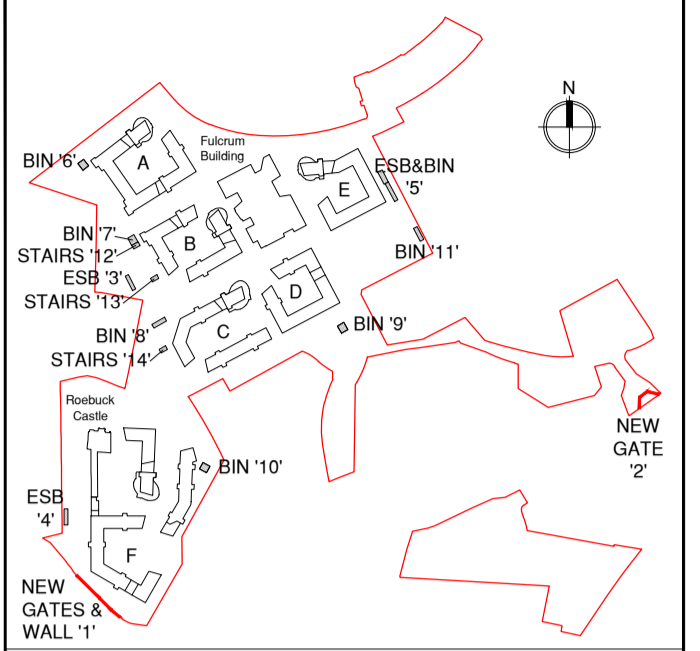


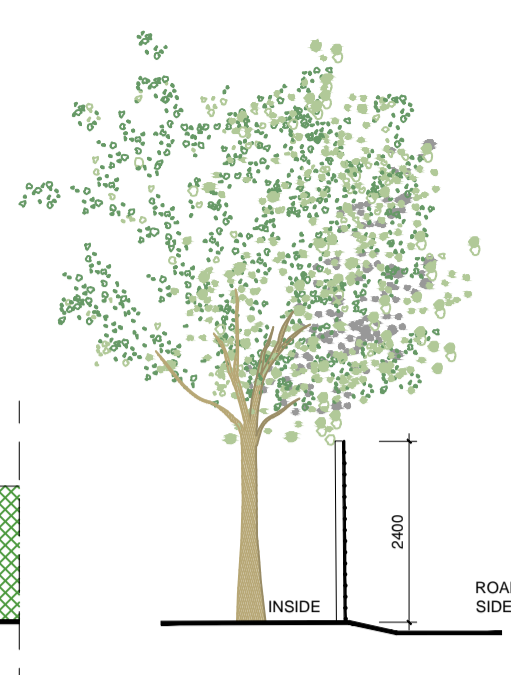
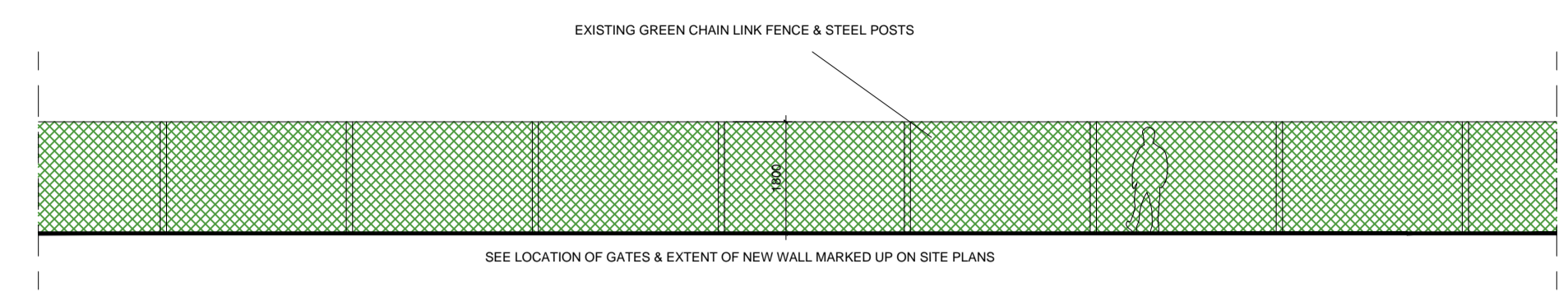
DO NOT SCALE FROM THIS DRAWING. USE FIGURED DIMENSIONS IN ALL CASES. VERIFY DIMENSIONS ON SITE AND REPORT ANY DISCREPANCIES TO THE ARCHITECTS IMMEDIATELY. THIS DRAWING IS TO BE READ IN CONJUNCTION WITH THE ARCHITECTS SPECIFICATION. © THIS DRAWING IS COPYRIGHT AND MAY ONLY BE REPRODUCED WITH THE ARCHITECTS PERMISSION.

NOTES

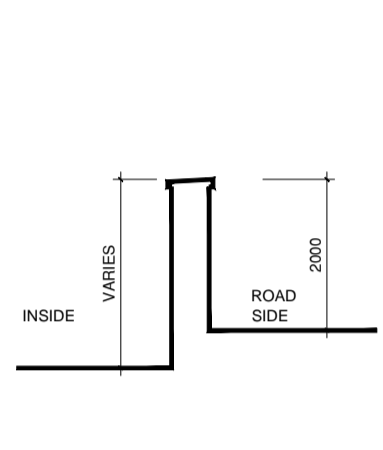
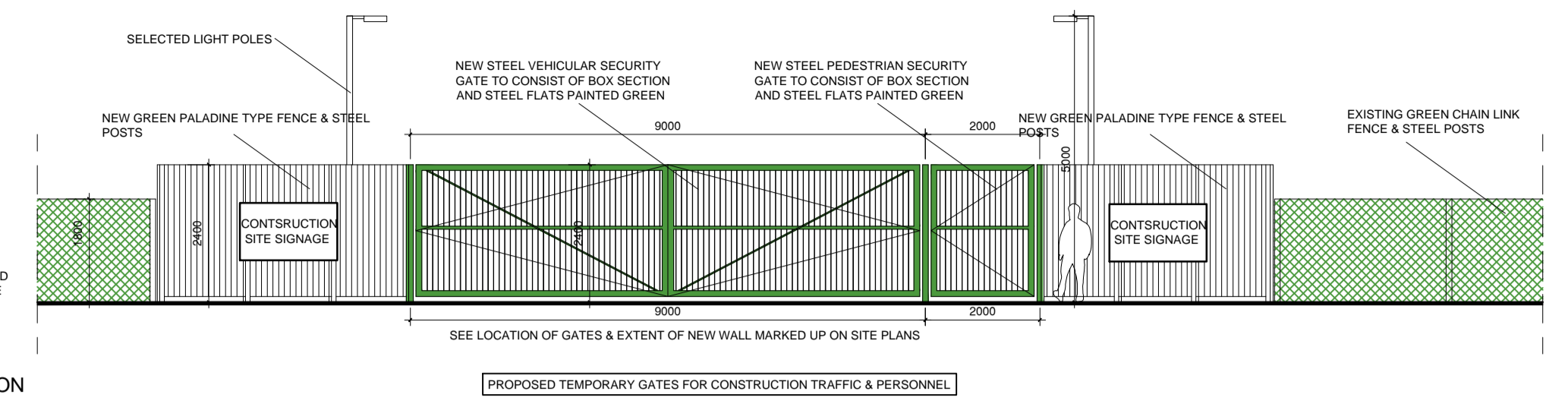
KEY PLAN



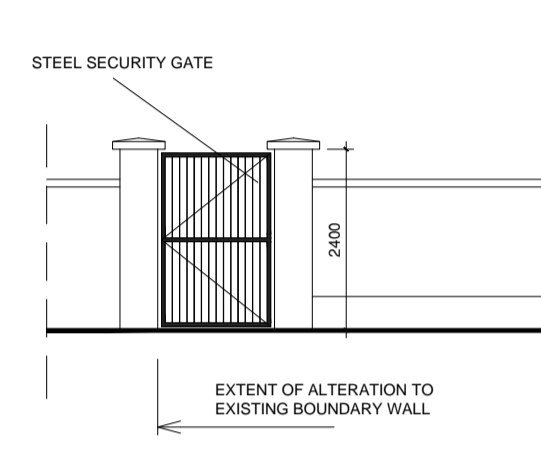
EXISTING SECTION  
BOUNDARY TREATMENT AT LOCATION '1' ON KEYPLAN  
SCALE 1:100



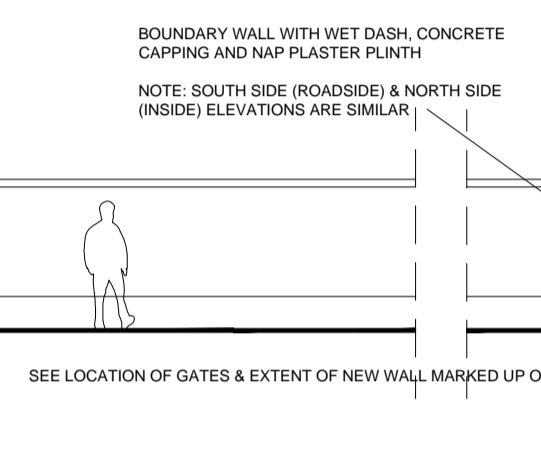
PROPOSED SECTION



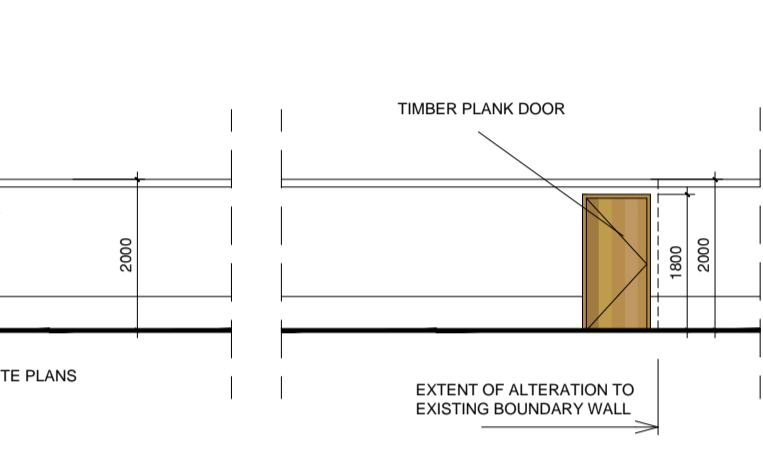
EXISTING SECTION



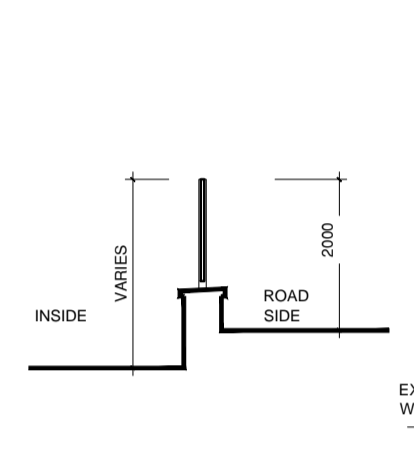
EXISTING SITE ENTRANCE GATE



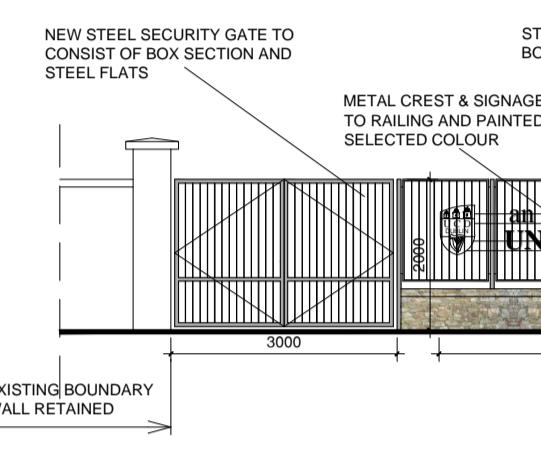
EXISTING SOUTH (ROADSIDE) ELEVATION



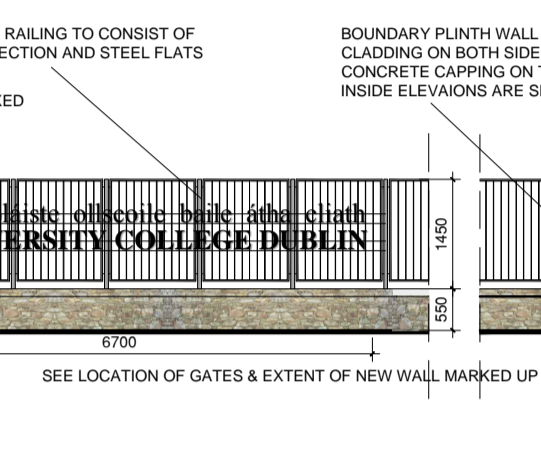
EXISTING GATE AT COTTAGE



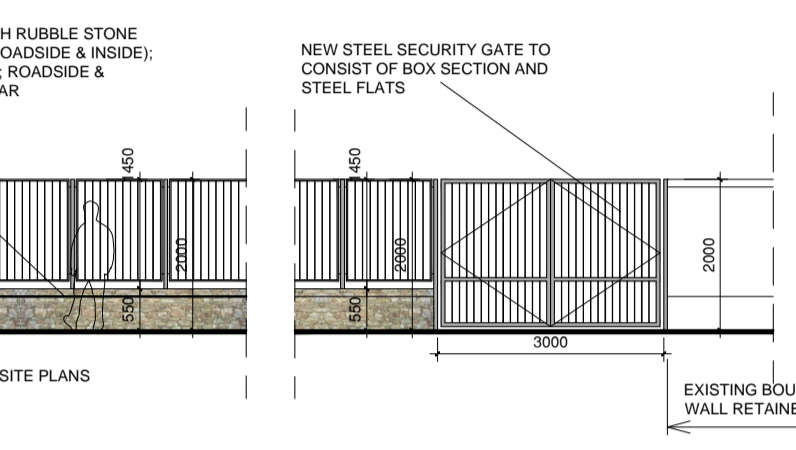
PROPOSED SECTION



PROPOSED SOUTH (ROADSIDE) ELEVATION

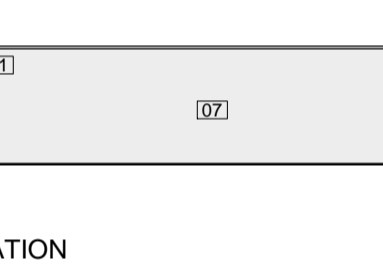


PROPOSED SOUTH (ROADSIDE) ELEVATION

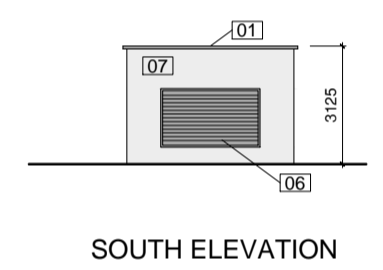


EXISTING GATE

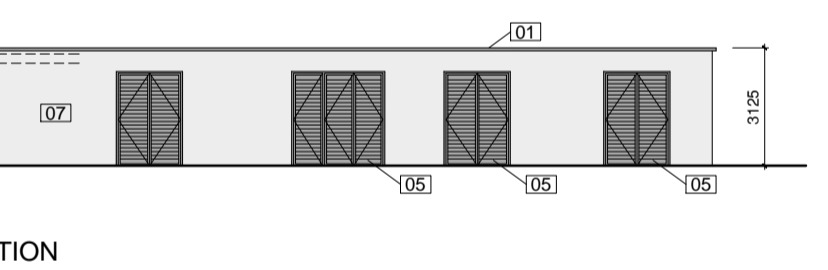
BOUNDARY TREATMENT '2' ON KEYPLAN  
SCALE 1:100



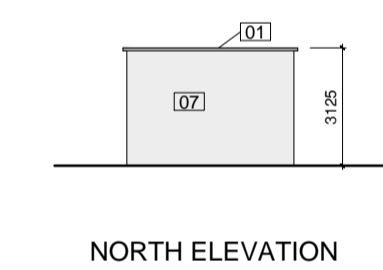
WEST ELEVATION



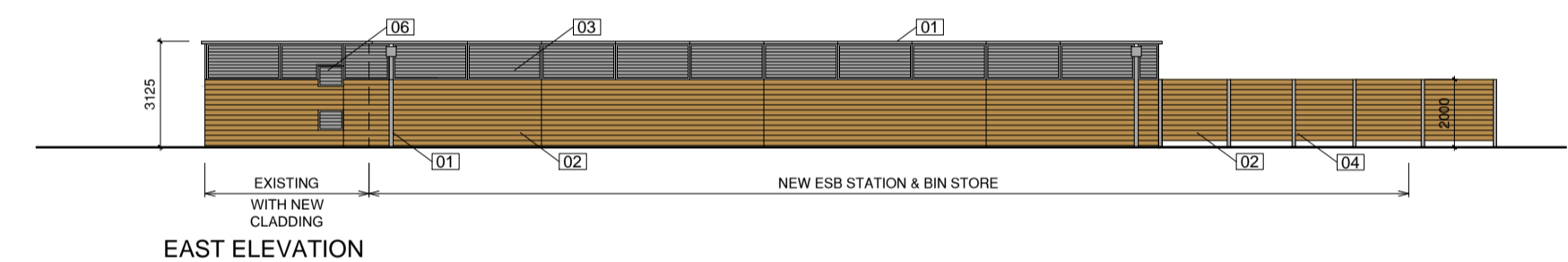
SOUTH ELEVATION



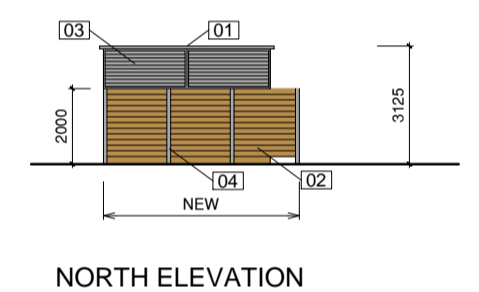
EAST ELEVATION



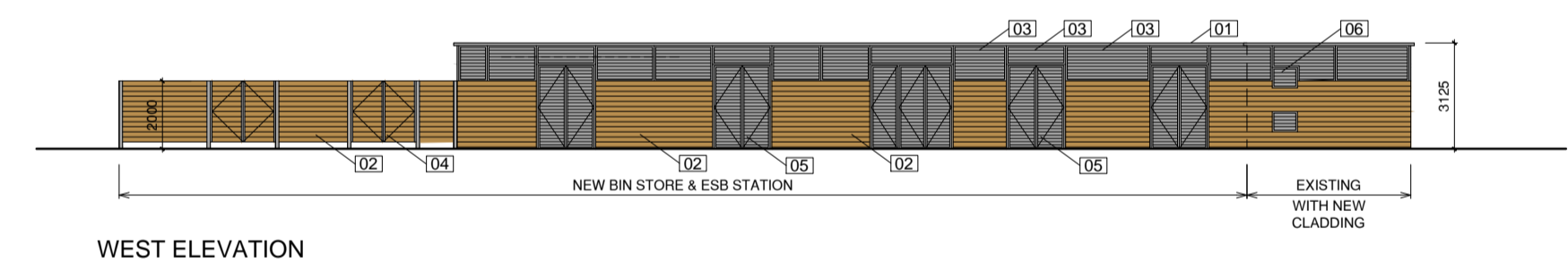
NORTH ELEVATION



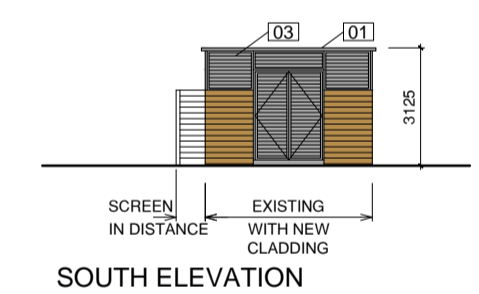
EAST ELEVATION



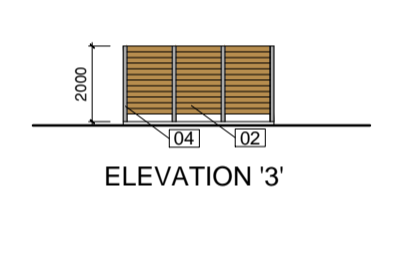
NORTH ELEVATION



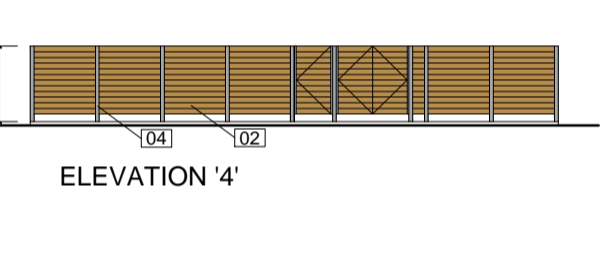
WEST ELEVATION



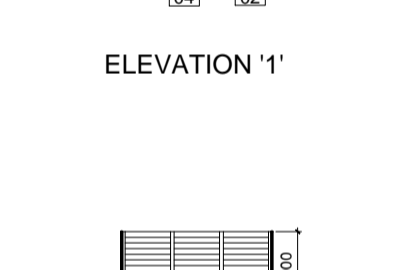
SOUTH ELEVATION



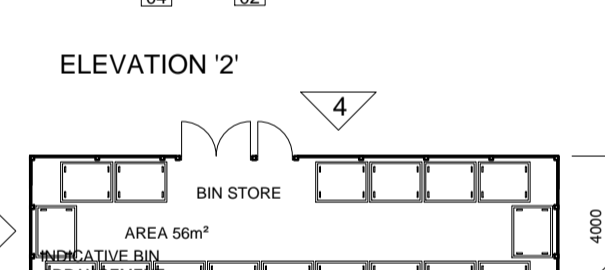
ELEVATION '3'



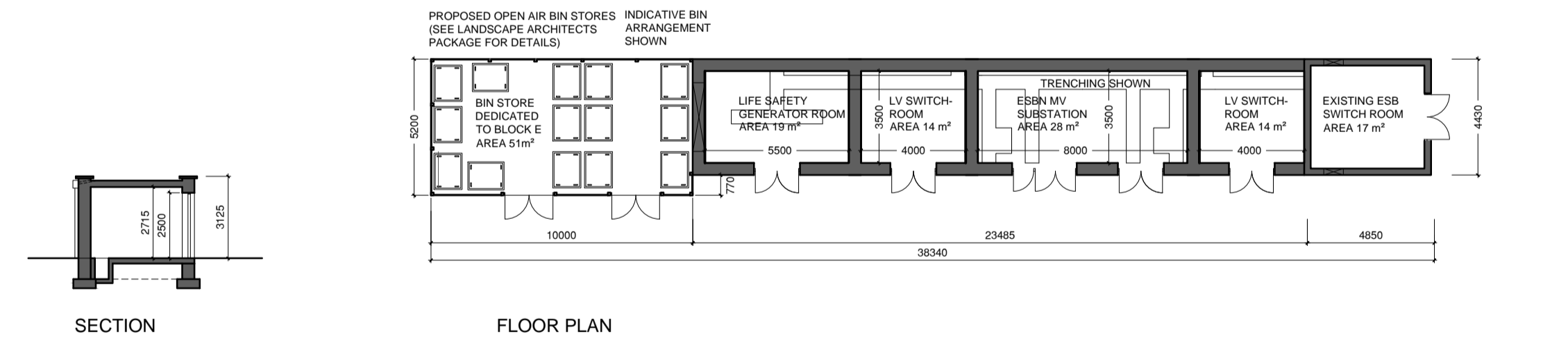
ELEVATION '4'



ELEVATION '1'



ELEVATION '2'



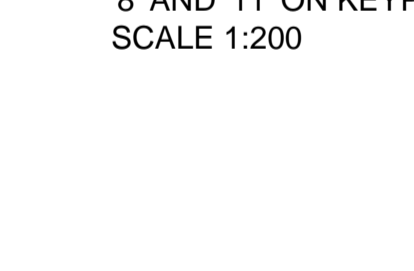
SECTION

FLOOR PLAN

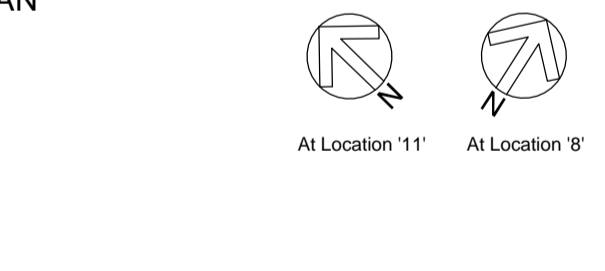
SECTION

FLOOR PLAN

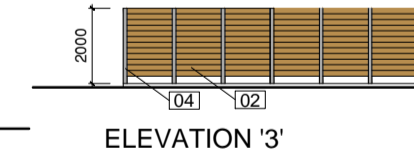
PROPOSED BIN STORES AT LOCATIONS MARKED '8' AND '11' ON KEYPLAN  
SCALE 1:200



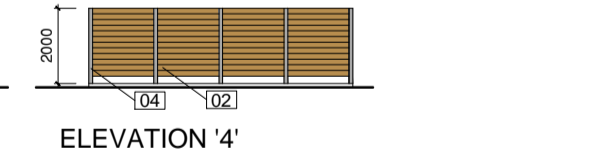
SECTION



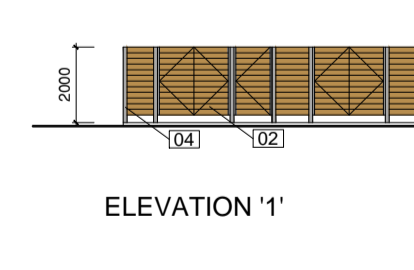
FLOOR PLAN



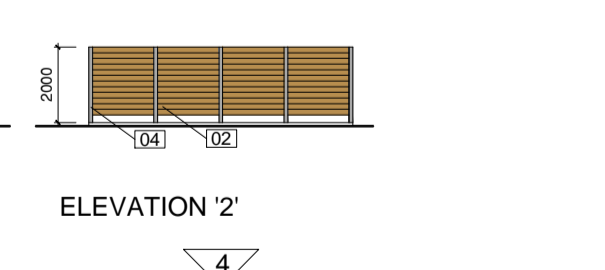
ELEVATION '3'



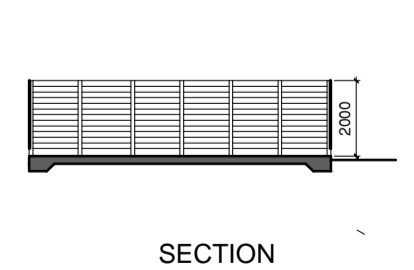
ELEVATION '4'



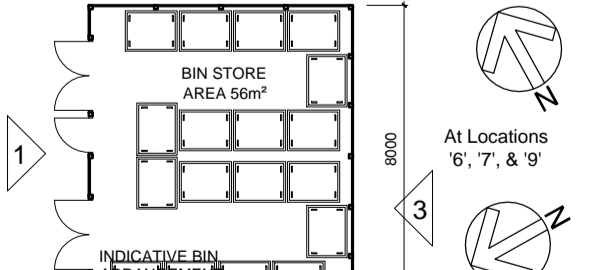
ELEVATION '1'



ELEVATION '2'

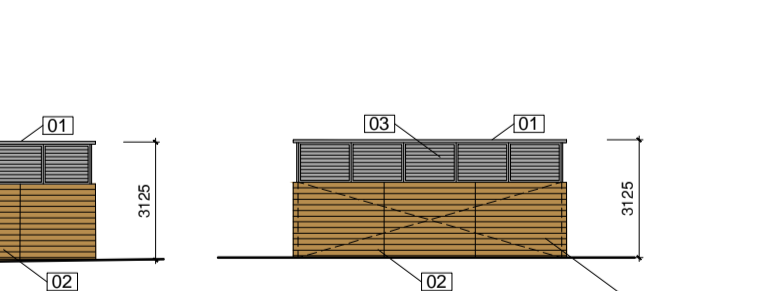


SECTION



FLOOR PLAN

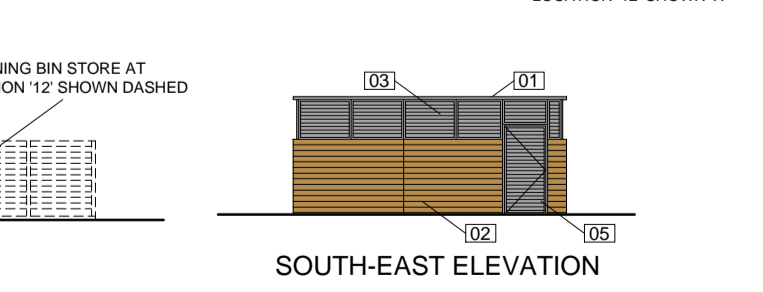
PROPOSED ESB SUB-STATION & BIN STORE AT LOCATION MARKED '5' ON KEYPLAN  
SCALE 1:200



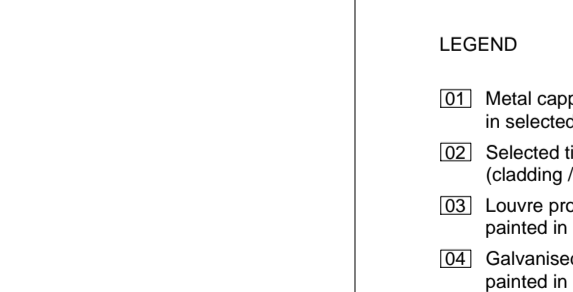
SOUTH-WEST ELEVATION



NORTH-WEST ELEVATION



NORTH-EAST ELEVATION

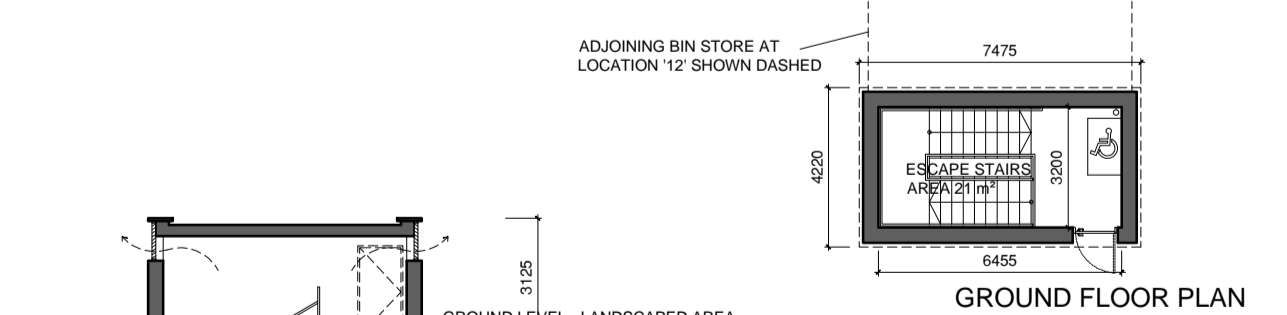


SOUTH-EAST ELEVATION

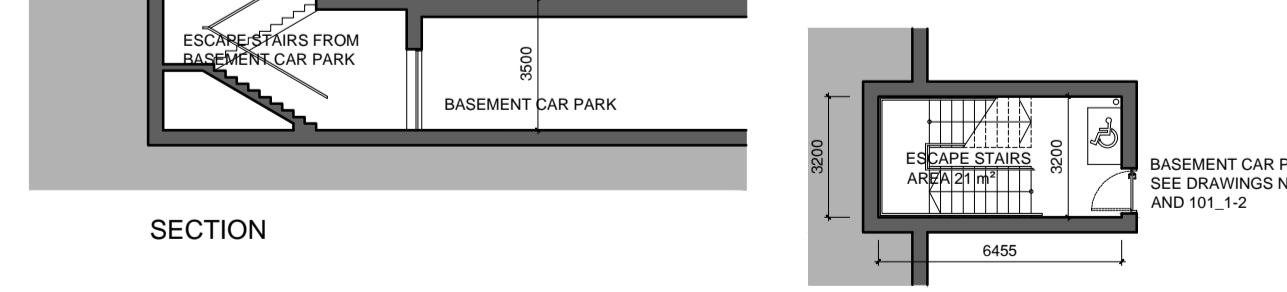
LEGEND

[01] Metal capping & RWPs in selected colour	[05] Galvanised steel doors with louvres
[02] Selected timber boards (cladding / enclosure)	[06] Galvanised steel louvres
[03] Louvre profiled metal cladding painted in selected colour	[07] Nap render finish, painted in selected colour
[04] Galvanised steel posts painted in selected colour	

PROPOSED ESB SUB-STATION AT LOCATIONS MARKED '3' AND '4' ON KEYPLAN  
SCALE 1:200



GROUND FLOOR PLAN



SECTION

BASEMENT LEVEL FLOOR PLAN

PROPOSED ESCAPE STAIRS FROM BASEMENT AT LOCATIONS MARKED '12', '13' AND '14' ON KEYPLAN  
SCALE 1:200



SECTION

REV	DTE	DRN	ISSUE

3.1 PLANNING

JOB  
UCD STUDENT RESIDENCES  
MASTERPLAN

CLIENT  
UCD

DRAWING  
SITE DETAILS - NEW BOUNDARY TREATMENT, ESB STATIONS, BIN STORES, ESC. STAIRS

DATE	SCALE	As shown @ A1
18.09.2017	As shown @ A1	
DRN: Balazs Keresztury	CHECKED: Ross Quinn	

JOB NO.	DWG NO.	REVISION
15-052	3.1_400	

NOTE: SEE FURTHER SITE DETAILS IN CIVIL-ENGINEERING & LANDSCAPE ARCHITECT PACKAGE

ORIGINAL SHEET SIZE - A1